

[www.PEBsteel.com](http://www.PEBsteel.com)

## PRE-ENGINEERED BUILDINGS



## VISION

- For PEB Steel to be recognized as the bench mark in the steel buildings industry. This will be accomplished through its product Perfection, engineering Excellence and the Best customer services in the industry.

## MISSION

- To bring the PEB technology to where it is most needed in the world, and help others "build a better life," through industrialization.
- To (jointly) build high capacity, efficient & cost effective steel factories for speedy delivery and for benefiting from "economies of large scale".
- To design and fabricate safe and technologically advanced buildings.
- To offer customers versatility in design & fabrication to meet their exact building requirements.
- To offer customer services second to none in the industry.

## VALUES

- Be a Leader and not a follower.
- Share Knowledge and Success with others.
- Forge local alliances wherever you go.
- Apply only the Latest design and buildings codes.
- Continually Improve our products.
- Customer service makes all the difference; customers are lifetime partners; always seek a Win - Win solution.
- The longest journey begins with the smallest step, so begin with the end in mind, and focus on the long term, not just the short term.

## OHSE POLICY

### *Occupational Health Safety and Environment*

- To comply with applicable occupational health and safety laws and regulations and set internal standards and other applicable requirements.
- To apply practices and use technologies that minimize risks to health & safety.
- To make continuous improvement in its activities to prevent personal injury and/or property damage.
- To comply with applicable environmental laws and regulations and other applicable requirements.
- To apply practices and use technologies that minimize pollution.
- To take corrective action whenever past practices have harmed the environment.
- To ensure that prompt action is taken whenever one of its activities endangers the health & safety of its Employees, Customers, the General Public, and the Environment.
- To make continuous improvement in its activities to prevent pollution of air, land & water.



## Contents

4-5	Introduction
6-7	Total Quality Solution
8-9	PEB Steel Pre-Engineered Buildings Standard
10	Standard Framing Systems
11	Standard Structural Details
12-16	PEB Products
17-45	Why PEB Steel ?
46-61	Projects Reference
62	Certification, Testimonials & Bank Reference
63	PEB Steel Network

Silver180™

Alu-Zinc

White Cream

Green Tea

PEB Blue

GalvaPeb

Alumin

Blue Tooth

Opal Green

# Sincere thanks to PARTNERS and CLIENTS for being with PEB Steel

## The Biggest Regional P.E.B. Factories Complex

### INTRODUCTION

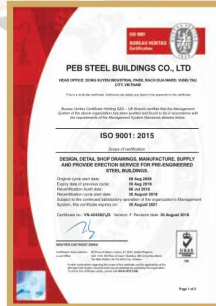
The PEB Group of companies, based in Europe, started its Asia operations in 1994 and was one of the first companies to bring the Pre-Engineered Buildings (PEB) technology to the East Asia region.

With over 6,000 buildings already completed in Vietnam, Thailand, Laos, Bangladesh, Qatar, India, Sri Lanka, etc, PEB has become a regional leader in the design, fabrication, supply, and construction of Pre-Engineered Steel Buildings.

PEB Steel Buildings Co, Ltd boasts an impressive list of satisfied local and international customers that includes, among others, such world class corporations as Obayashi, Taisei, Samsung, Doosan, Posco, Kumagai, Unilever, Reliance Industries and Procter & Gamble.

Our offices in Vietnam are staffed with over 150 talented and experienced engineers who would be very pleased to offer you completely free consultation, a comprehensive quotation including proposal drawings, in the shortest possible time-frame.

### Certifications & Awards





## TOTAL QUALITY SOLUTION: Design, Detailing, Fabrication & Erection

PEB STEEL MYANMAR FACTORY (Thilawa Special Economic Zone) - 30,000 sqm



Conceptual Design



Proposal Drawings



Contract Awarded



Detailing by Tekla Software



Shot Blasting



Full Automatic Welding Lines



Plasma Cutting Line



Shearing & Cutting



Galvanized Purlins & Zinc Alum Panels



Unloading

Erection



Heavy Steel Structure Factory (Doosan - Korea) - 11,300 MT

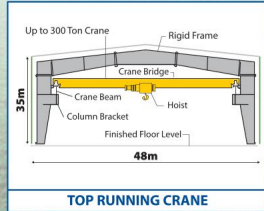
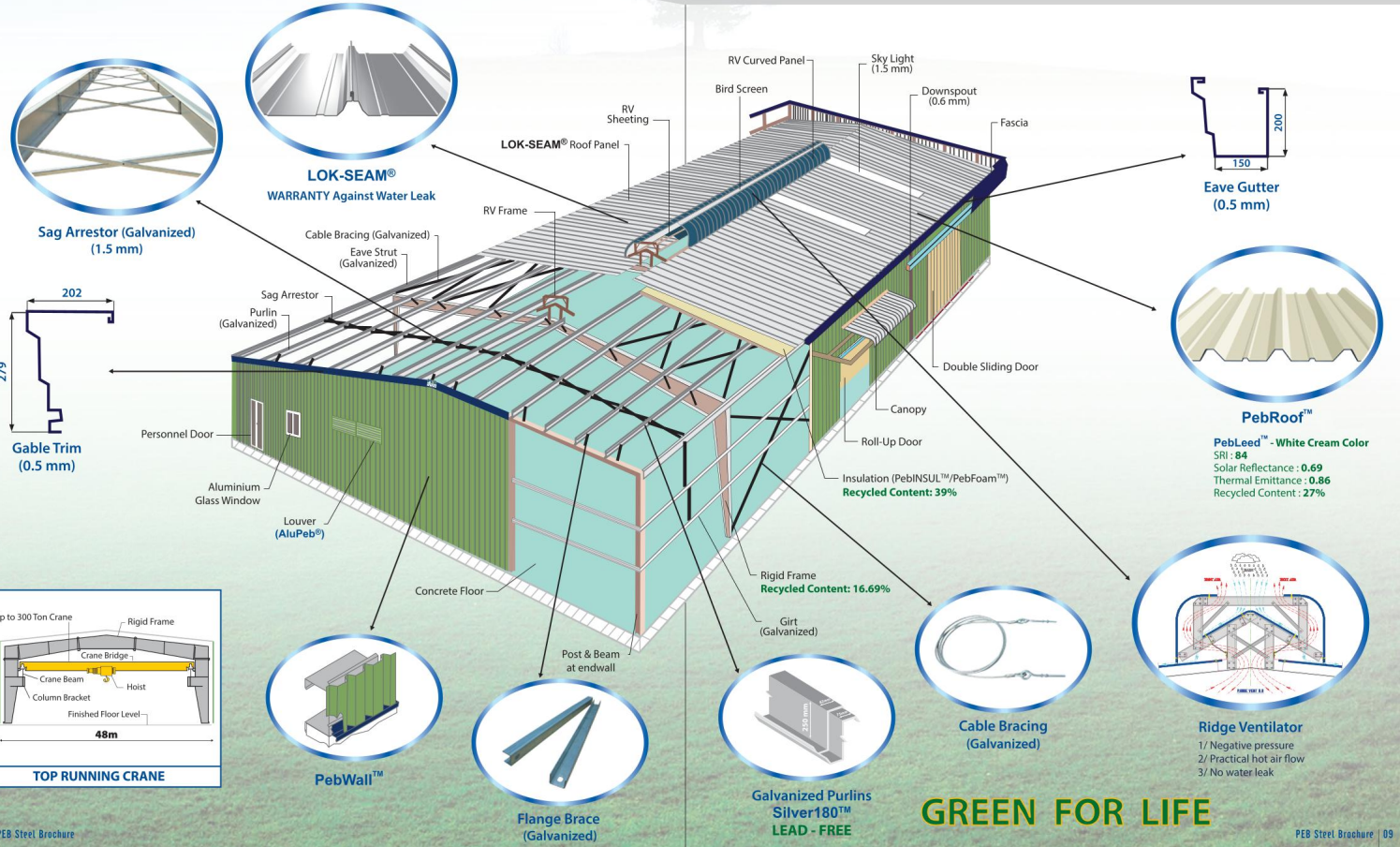
# PRE-ENGINEERED BUILDINGS STANDARD

VIETNAM

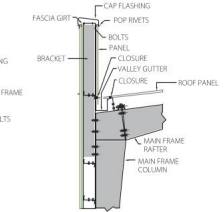
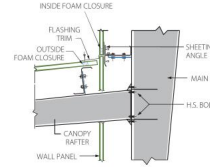
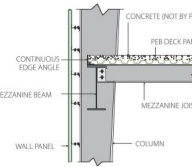
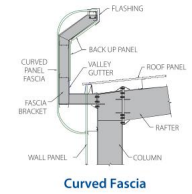
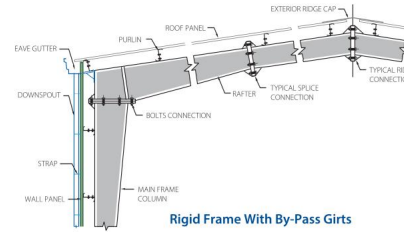
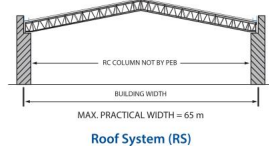
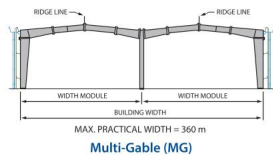
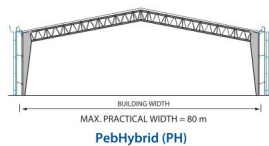
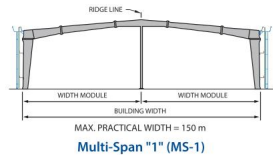
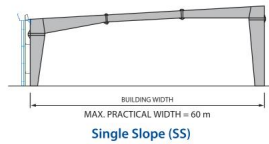
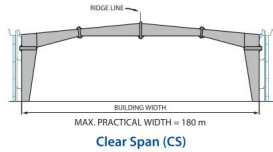
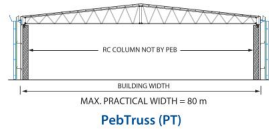
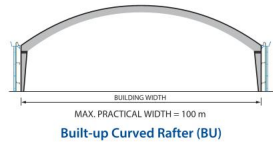
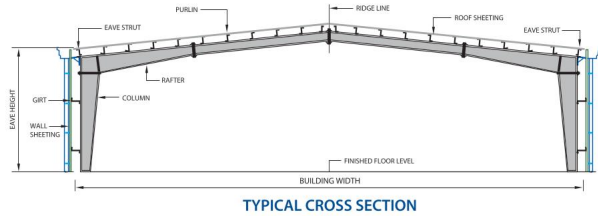
**FACTORY 1**



STRUCTURAL STEEL FACTORY



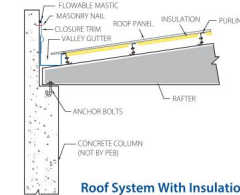
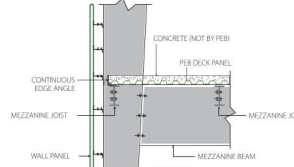
**GREEN FOR LIFE**



**Mezzanine Joist Connection to Mezzanine Beam**

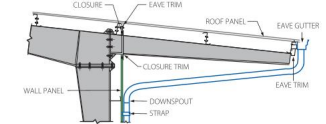
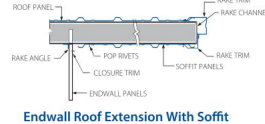
**Canopy**

**Parapet Fascia**



**Mezzanine Beam Connection to Main Frame Column**

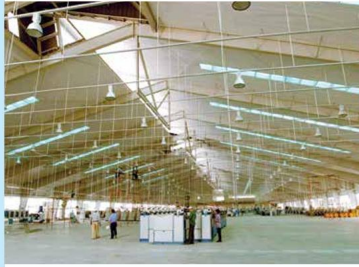
**Roof System With Insulation**



**Endwall Roof Extension With Soffit**

**Sidewall Roof Extension**





Roof Liner



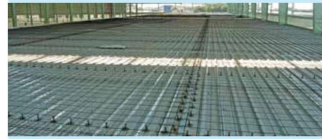
Up to 300 Ton Crane



Partitions



Tripper Beam



Composite Decking



Wall Liner



Huge Truss Jack Beam



Conveyor



Mezz: Column, Beam, Joist, Deck



Hanging Pipes



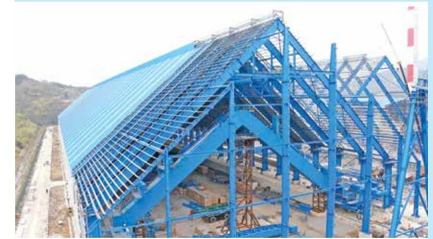
15m Bay Spacing



Composite Roof with Sub Purlin



Portal Bracing



Reclaimer



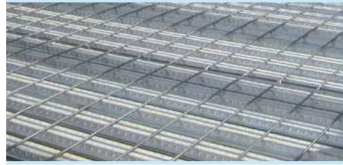
Nike Shoes Factory (Can Sport - Taiwan) - 180,000 m<sup>2</sup>



Multi-Level Crane Beam



Conveyor System



PebDek® with Reinforcement



Grating & Handrails



Catwalk



Steel Grating



Framed Opening



Louver



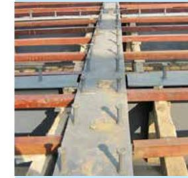
Staircase



Expanded Metal



Hangar Door



Composite Beam



Mesh for RV



Cage Ladder



Wide Canopy

Up to 24m



Pipe Rack



Staircase without Support



Special Size Door



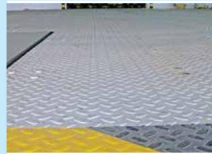
Double Sliding Door + Curved Canopy



Personnel Door



Roll Up Door



Chequered Plate

**Sundry Items**

**Anchor Bolts:**

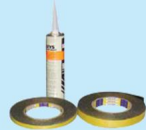
- JIS G3101 - S5400 (or equivalent)  
Fu=40.0 kN/cm<sup>2</sup>.
- Galvanized anchor bolts.
- 03 nuts for anchor bolts.
- Plastic cap for anchor bolts.

**High Strength Bolts:**

- ASTM A - 325 type 1 (or equivalent), galvanized.

**Machine Bolts:**

- DIN 933 - Grade 4.6 (or equivalent), galvanized.



Sealants & Mastic



Anchor Bolts (Galvanized)  
3 nuts & 2 Washers



Hillside Washer (Galvanized)



Galvanized Fasteners  
with 19mm EPDM Washer



3 Nuts



Plastic Cover



Bolts & Nuts (Galvanized)

**Latest International Codes**



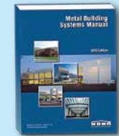
IBC 2015 Building Code



AWS 2015 Welding Code



AISC 2016 Design Code



MBMA 2012



AISI 2013 Cold Formed Code

**DEFLECTION**

VERTICAL DEFLECTION	Main Frame Rafters / Roof Purlins	Deflection Limitation: Span/180
	Top running crane (TRC) beams	Deflection Limitation: Span/600
LATERAL DEFLECTION	Main Frame columns with eave height (EH) up to 9.0 m	Deflection Limitation: Eave height/60
	Wall Girts	Deflection Limitation: Span/120

**Diversified Steel Structures**



MegaBeam



Laced Column



Heavy Column



Built-up Curved Rafter



Double Crane Beam



PebHybrid™ Mezz Joist



PebHybrid™ Rafter



Curved Steel Frame



Box Rafter

# WHY PEB STEEL ?

## Galvanized Bracing (Anti-Rust & Beautiful)



Galvanized Cable Bracing



Galvanized Flange Bracing

- Cable (EN 12385 or GB/T20118-2006 or equivalent)  
Fu=157 kN/cm<sup>2</sup> Hot Dip Galvanized
- X bracing: Galvanized bracing
- Flange Bracing: Galvanized flange bracing



## Steel Plates From Japan: NSJ 345



## Dimensional & Visual checking and Magnetic Testing (MPI)



## Ultrasonic Testing



## Best Steel Protection: Free Shot Blasting for All Jobs



## Top Class Paint



## Dry Film Thickness Checking



## Various Coating Solutions

### Silver180™

Ultimate Corrosion Protection



CHROMATE - FREE

Silver180™ is 180gr/m² Alum, Zinc, Mag Coating Panels made in Japan/Korea Only, Unpainted High Quality Solution

- Best Corrosion Protection for Severe Corrosion Projects involving: Animal Feed/Sheds, Fertilizer Urea, Ammonia, Close proximity to Sea/Ocean
- Not Only Rust Resistant on Flat Surfaces, But also on Cut-End surfaces
- Extremely High Alkaline resistance
- Suitable for Severe Corrosion Environments
- Excellent for Valley Gutters too.

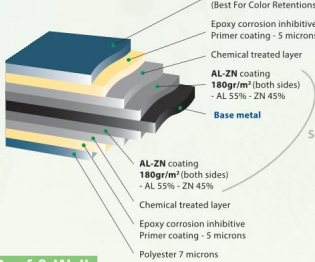
#### PRODUCT DESCRIPTION:

Base Metal Thickness (mm)	Total Coating Thickness (mm)
0.45	0.50 - roof/ wall
1.45	1.50 - purlin
1.85	1.90 - purlin
2.35	2.40 - purlin

### Roof & Purlins

### Hyper180™

No color Change



AZ180  
For The Most Severe Corrosion Resistance

Hyper180™ is 180gr/m² Alum Zinc Coating with TOP QUALITY High End PVDF Paint to Prevent Color Change

- The AZ180 Coating is Much More Superior than Most Available panels. Excellent Corrosion Protection
- The PVDF paint will Guarantee NO color Change for many years.
- Suitable for Severe Corrosion Environments with NO Color Change Requirements

#### PRODUCT DESCRIPTION:

Base Metal Thickness (mm)	After Paint Thickness (mm)
0.42	0.50
0.52	0.60

### Roof & Wall

### Alu-Zinc™

Bare AZ150 AluZinc



CHROMATE - FREE

Alu-Zinc™ is 150gr/m² Alum Zinc Coating, Unpainted Economical Solution

- The AZ150 Coating will Guarantee Excellent Corrosion protection
- Suitable for Mild Corrosive Environments

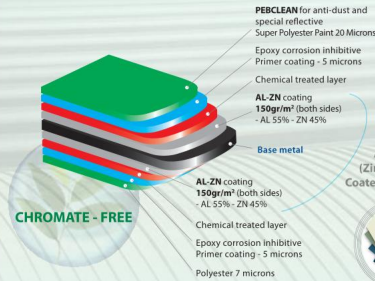
#### PRODUCT DESCRIPTION:

Base Metal Thickness (mm)	Total Coating Thickness (mm)
0.45	0.50

### Roof, Wall & Deck

### AluPeb®

Super Polyester Painted AZ150 AluZinc



CHROMATE - FREE

AluPeb® is 150gr/m² Alum Zinc Coating with Super Polyester High Quality Paint

- The AZ150 Alum Zinc Coating will Guarantee Excellent Corrosion resistance
- The Super Polyester Paint is Twice better than the Available Polyester Paint
- The Super Polyester Paint will Guarantee NO Color Change and Help Achieve High Corrosion resistance

#### PRODUCT DESCRIPTION:

Base Metal Thickness (mm)	After Paint Thickness (mm)
0.42	0.50
0.52	0.60

### Roof & Wall

### GalvaPeb™ - Zero Spangle Galvanized Purlin & Girt: C & Z Shape

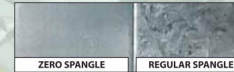
Hot - dipped zinc coating high tensile steel (275gr/m² total Zinc Coating)



LEAD-FREE ZINC COATING

Z Shape

C Shape



### Purlin & Deck

### Panel Chart



Alu-Zinc™



Silver180™



White Cream



Green Tea



Opal Green



Alumin



Blue Tooth



PEB Blue



# WHY PEB STEEL ?



## Green Material for Pre-Engineered Buildings

### \* **PebLeed™** Best Heat Reflectance Coils

**White Cream Color**  
SRI: 84  
Solar Reflectance: 0.69  
Thermal Emittance: 0.86

**PebClean** for anti-dust and special reflective Super Polyester Paint 20 Microns

Epoxy corrosion inhibitive primer coating - 5 microns  
Chemical treated layer  
AL-ZN coating  
**150gr/m<sup>2</sup>** (both sides)  
- AL 55% - ZN 45%

Base metal

AL-ZN coating  
**150gr/m<sup>2</sup>** (both sides)  
- AL 55% - ZN 45%

**CHROMATE - FREE**

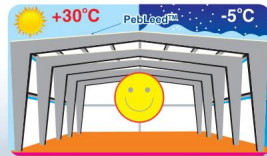
Chemical treated layer  
Epoxy corrosion inhibitive primer coating - 5 microns  
Polyester 7 microns

**Roof & Wall**

### Lower Energy Consumption

PebLeed™ solar reflectance technology acts as added insulation in hot weather. In moderate to hot climates, compared to roofing material of similar color with lower solar reflectance, PebLeed™ can reduce annual cooling energy consumption.

PebLeed™ reduces peak roof temperature by up to 5°C for **White Cream Color**. Greater comfort while using less energy helps to reduce cost and is friendlier to the environment.



PebLeed™ roofing is used to lower surface temperature by absorbing less heat from the sun. PebLeed™ can reflect the solar heat of a roofing material.

PebLeed™ panel (White Cream Color) results in reduced heat retention after a long hot summer day, providing an opportunity to achieve cooler surface temperatures

Increased global warming and government focus on climate change, have directed the attention to the need for greater thermal efficiency especially in a tropical climate.

Green building rating tool such as **Leadership in Energy and Environment Design (LEED)**, require materials with high SRI values. PebLeed™ offers higher SRI values thus complying to the green building requirements.

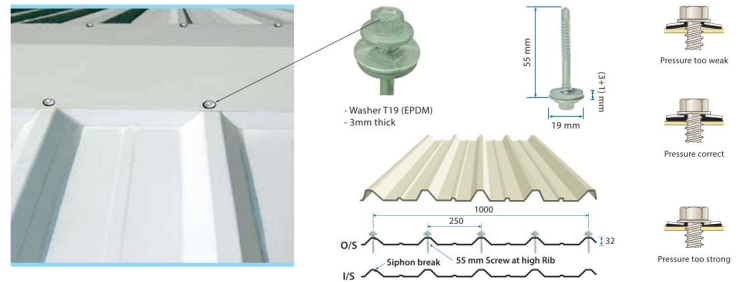


## FACTORY 4

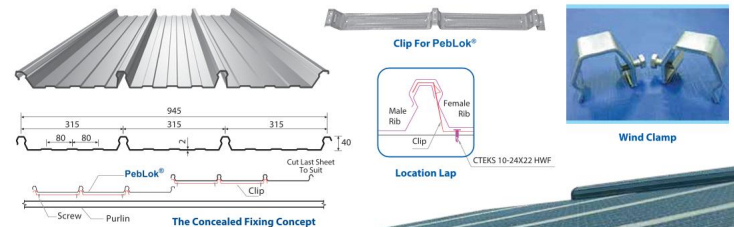


## Various Panel Profiles

### \* **PebRoof™** : Roof Sheeting With 55mm Screw, 19mm Wide, 3mm Thick, (EPDM) Washer



### \* **PebLok®** - Optimum Solution for Water Tight Buildings



### Reflected Heat of Roof

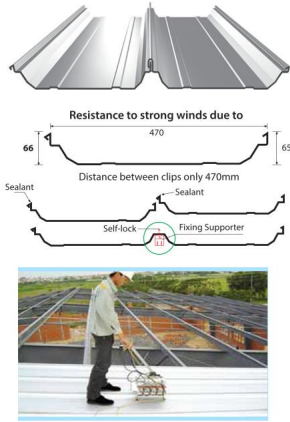


## Various Panel Profiles

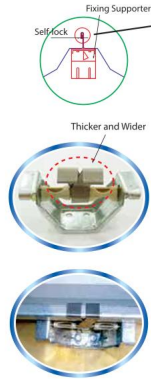
\* Water Leak Optimum Solution for Building: Roofing System That Locks & Seams

### LOK-SEAM®

WARRANTY Against Water Leak

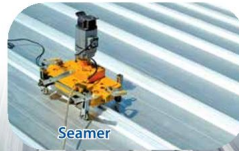
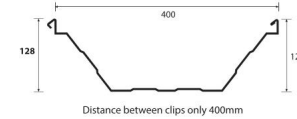
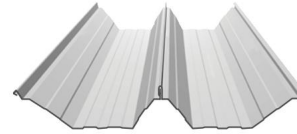


Standing Seam Roof 360°



## PebSeam 128™ (The Ultimate Roof Profile)

WARRANTY Against Water Leak

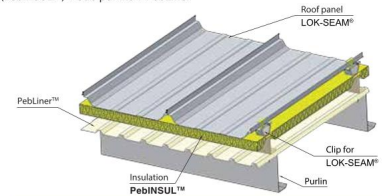


## \* Site Sandwich Panels

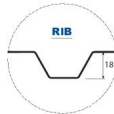
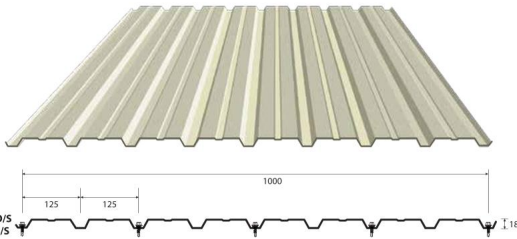
Components include LOK-SEAM® roofing + Fiber glass Insulation (PebINSUL™) + Sub purlins + PebLiner™

### Product Description

Panel Thickness (mm)	U-Value "U" (W/m <sup>2</sup> .K)
50	0.57
100	0.40

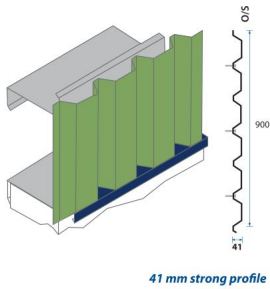


## PebLiner™ : Liner Panel for Roof & Wall

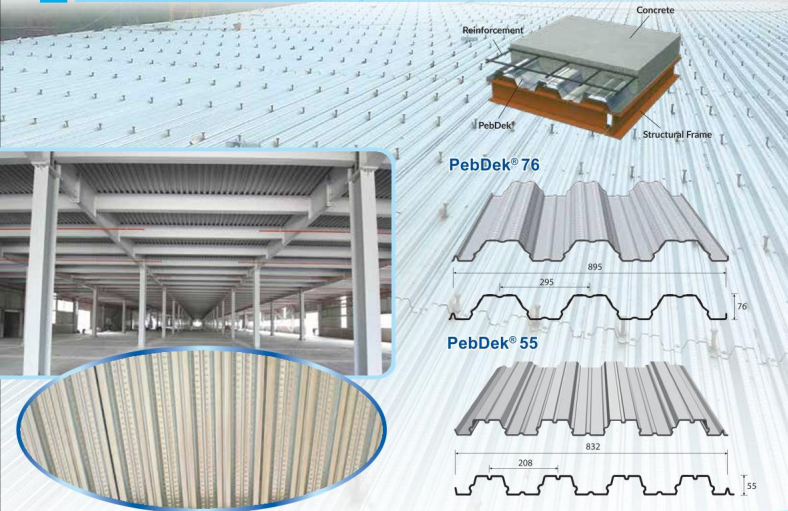


# WHY PEB STEEL ?

## PebWall™ : Very attractive and strong wall panel



## PebDek® (Deck): Silver180™ - High Alkaline Resistance



## Attractive Building: 8m long, 0.50mm thick Trim, Flashing, Gutter & Downspout



## Efficient Ventilation



Ridge Ventilator (RV3.0)



# WHY PEB STEEL ?

## **PebFoam™** : Energy Efficient Solutions Without Affecting Environment and Human Health

PebFoam™ green flame retardant cross-linked polyethylene foam laminated with woven aluminum foil.

### WHY PebFoam™ ?

Roof Insulation

#### Environmental Benefits

- CFC's, HCFC's and VOC free
- No Plasticizer, heavy metals and formaldehyde
- Reduce CO<sub>2</sub> emissions
- Reusable and Recyclable
- Non hazardous
- Anti-bacterial and anti-fungal
- Fibrous free
- Antimicrobial
- Low smoke emissions

#### Economical Benefits

- 3-in-1: Insulation, thermal break and vapour barrier
- Strong, tough, durable
- Quick and easy to install
- Reduce waste of energy and material
- Reduction in utility bills
- No maintenance and made to last
- Reduce construction waste

#### Social Benefits

- Improve indoor air quality
- Improve health
- User friendly
- Water-resistant and Moisture free
- Rodent and insect resistant
- Odourless
- Friendly to skin



#### Product Description

Thickness (mm)	Width (m)	Length (m)
5	1.2	100

#### Our References:

- Pharmaceutical Facility
- Food processing
- Convention Center
- Hypermarket
- Airport
- Commercial Building
- Electronic Plant
- University
- Showroom



## Efficient Heat Reduction (PebINSUL™) : Insulation with NFR-1 Facing



VERY STRONG NFR-1 FACING

No Wire Mesh Needed

## After Sales Service: 10 years structural design warranty



Takako Vietnam Factory (Obayashi - Japan)



13 Colors, Saigon TanTec Leather Factory (Germany)



34M High, Shipyard (Aker Yard - Norway) - 1,300 MT

## Fast 4 Weeks Delivery



Container Skid



Loading



Transportation



# WHY PEB STEEL ?



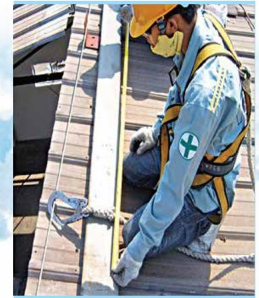
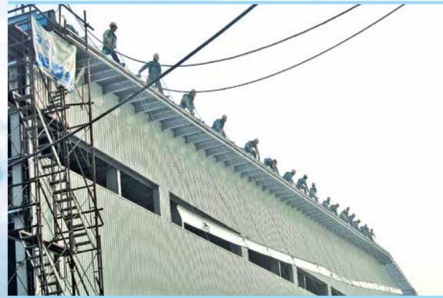
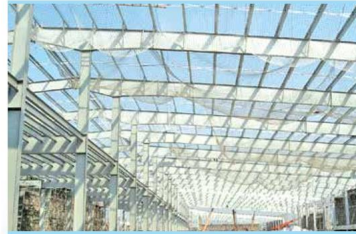
Safety - Together We Save Lives



# WHY PEB STEEL ?



Safety - Together We Save Lives



Anheuser - Busch Inbev Binh Duong Brewery Factory (USA)

# WHY PEB STEEL ?



Export to Asia, Middle East, Africa, etc.



FCB Warehouse Phase 2 (Thailand)



SJC Concrete Warehouse (Thailand)



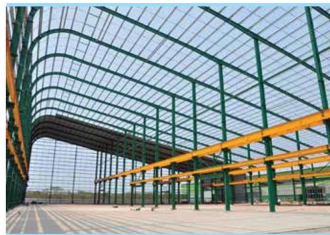
Log Thai Factory (Thailand)



GoldCity Footware Warehouse (Thailand)



CJ Logistics Warehouse (Thailand)



Permsin Steel Factory (Thailand)



Rental Warehouse - 3 Buildings (Thailand)



Ticon Logistic Warehouse (Thailand)



Jia Meng Rice Mill (Thailand)



TICON Rental Warehouse (Thailand)



Kaweevan Concrete Factory - Huge Overhead Crane capacity 56MT (Thailand)



TPK Ethanol Warehouse (Thailand)



Hong Tractor at Suphanburi (Thailand)



1 Km long, FCB Warehouse (TPIPL PLC - Thailand)

# WHY PEB STEEL ?



Export to Asia, Middle East, Africa, etc.



Krakatau Osaka Steel Mill (Indonesia)



85% Slope for Fertilizer Storage (PT Pupuk Kaltim - Indonesia) - 1,650MT



Lidayway Factory (Indonesia)



NPK Warehouse, Wilmar Project (Indonesia)



PT. Greenfields Cow Farm (Indonesia)



Flat Storage, Krakatau Bandar Samudera, Cilegio (Indonesia)



Dove Soap Plant (Indonesia)



Fatty Acid Plant (Indonesia)



Hydrogenation Plant (Indonesia)



Minebea Electronic Products Factory (Cambodia)



Peng Huoth Golf Club (Cambodia)



Minebea Cambodia Factory (Sato Kogyo - Cambodia)

# WHY PEB STEEL ?



Export to Asia, Middle East, Africa, etc.



C.P Food Factory - 15m Wide Canopy (Cambodia)



TKG Factory (Cambodia)



Narawat Power Plant (Cambodia)



Feed Mill (Cambodia)



Heineken Factory (Cambodia)



Crown Beverage Cans Factory (Cambodia)



Phnom Penh Airport Bus Terminal (Cambodia)



Behn Meyer Warehouse (Malaysia)



Cut & Bend Factory (Malaysia)



Asia Cargo Warehouse (Philippines)



Denso Factory (Cambodia)



Tshung Tsin Basketball Court (Malaysia)



Fertilizer Warehouse (Malaysia)



San Miguel Feedmill, Bulacan, Philippines



Total 9,000MT BSRM Steel Mill with Laced Columns (Bangladesh)

# WHY PEB STEEL ?



Export to Asia, Middle East, Africa, etc.



Full Steel Structure + Hangar Door: Design, Manufacture & Supplier by PEB Steel

**WIDEST  
128M CLEAR SPAN**

Lufthansa Aircraft Hangar (Philippines)



San Miguel Feedmill (Philippines)



La Mamita's Poultry (Polytrade - Philippines)



14-floor Workspace Building (Philippines)



47M High, Agri King Tower (Philippines)



Manila Bay Resorts (Philippines) (Impressive curved corridor)



BonPack Warehouse (Philippines)  
(Loading bay with huge wide canopy of 12-18m)



HMRID Distribution Warehouse (Philippines)



Pepsi Cola Bottle Manufacturing Plant (Philippines)



Unilab Factory (Philippines)



Japan Tobacco International Factory (Philippines)



Box Column



Dashen Brewery Factory (Ethiopia)

# WHY PEB STEEL ?



Export to Asia, Middle East, Africa, etc.



Six - Floor NMMC Hospital (Philippines)



Divine Mercy Pilgrim - Domed Roof (Philippines)



Toyota Showroom (Philippines)



Aboltiz Shipyard (Philippines)



Japan Tobacco (Mild Seven Cigarette) Factory (Myanmar)



Crystal Diamond Factory (Myanmar)



Golden Lace Daewoo (Myanmar)



Pahtama Group Distribution Center (Myanmar)



Pacific Asia Link Garment Factory (Myanmar)



Dulwich International School (Myanmar)



Jade Land Warehouse (Myanmar)



Victory Cycle Warehouse



Heineken Brewery Factory (Myanmar)



De Heus Factory (Myanmar)



Palm Oil Mill (Yuzana - Myanmar)



Helicopter Hangar (Myanmar)



Lluvia Confectionery Factory (Myanmar)

# WHY PEB STEEL ?



Export to Asia, Middle East, Africa, etc.



Isuzu Showroom (Laos)



Xe-Pian Xe-Namnoy Hydroelectric Power Plant (Laos)



Ceylon Glass Factory (Sri Lanka)



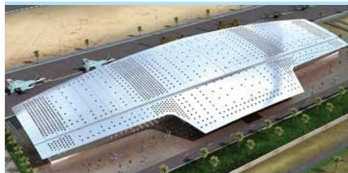
Seven - Floor Office Building (Bangladesh)



Reliance Industries Refinery Factory (India)



Gujarat Glass Factory (India)



Airbase Spectator's Venue (Saudi Arabia)



BSRM Steel Mill (Bangladesh)



AFRICANA Supermarket (Angola)



ASIAN Sport Games (Qatar)



Aircraft Hangars in Sargodha, Kamra, Mianwali, Quetta (Pakistan)



Aircraft Hangar in Karachi (Pakistan)



John Kiessey Warehouse (Australia)



Unison - BHP Petroleum (Australia)



Church (Papua New Guinea)



Forward Sports Production Hall (Pakistan)



Buwon Vietnam (Nike Shoes Factory - Korea)





45M High, DSM (Switzerland) Nutritional Products Factory



YKK Vietnam Zipper Factory (Hazama - Japan) - 40,000 m<sup>2</sup>



Medochemie Pharmaceutical GMP License (Cyprus - EU)

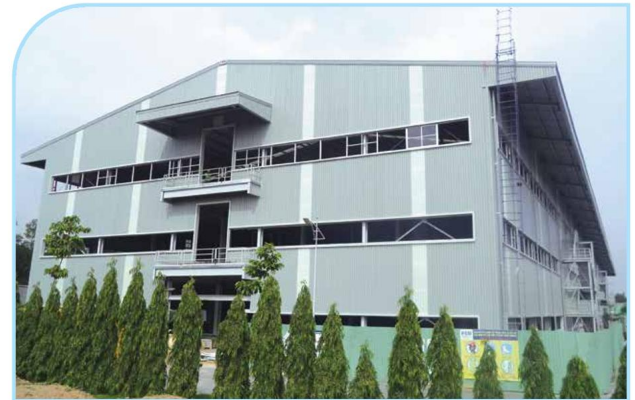


Steel Pipe Factory (Nippon Steel - Japan)



Total  
270,000m<sup>2</sup>

Gain Lucky Vietnam Factory (China)



Nike Shoes Factory (All Wells - Taiwan) - 2,500 MT

# PROJECTS REFERENCE



CP Vietnam Factory (Gerico - France) - 1,600 MT



96M Clear Span, Nike Shoes Factory (Jooco Dona - Korea)



Mezzanine Mainframe for Logistics Center Tokyo (Japan)



Camau 1 & 2 Combined Cycle Power Plant - 1,100 MT



90M Clear Span for California Waste Solution (USA) - 1,320 MT



Bird eye's view of Mong Duong II Power Plant (AES - USA)

**BIGGEST  
18,300MT**

For DOOSAN in Quang Ninh & Quang Ngai Province



Siding Works Project of Mong Duong II Power Plant (Doosan) - 50,000m<sup>2</sup>  
Using Hyper180™ Panel (AZ180 Coating + PVDF Paint)



Kenda Vietnam Tyre Factory (Taiwan) - 100,000 m<sup>2</sup>



230m High, Top Roof Steel Structure for Vietcombank Tower



50M Single-Span Loading Bay

Binh Minh Plastics Factory (Vietnam)



Kokuyo Stationery Factory (Obayashi - Japan) - 23,000 m<sup>2</sup>



135 days Schedule - Design, Detailing, Fabrication & Erection for 110,000 m<sup>2</sup>

Tyre Factory (Sailun - China) - 150,000 m<sup>2</sup>

15M Bay Spacing

# PROJECTS REFERENCE



Nitori Furniture Factory (Vietnam)



80M Clear Span for Puma Shoes Factory (Samho - Korea)



LG Electronics Haiphong Factory (GS - Serve One) - 1,620 MT



AHT Steel Mill - 1,000 MT



Ben Luc Shipyard (SEAS - France)



24M High, 30MT Crane Song Thu Shipyard



Yazaki EDS Factories in Tra Vinh & Quang Ninh Province, Vietnam



Liwayway (Oishi) Factory (Philippines) - 70,000 m<sup>2</sup>



Largest Distribution Center in Vietnam (Unilever - Netherlands) - 71,200 m<sup>2</sup>

## PROJECTS REFERENCE



102% Roof Slope, SoyBean Meal Factory (Baria Serece)



Sankyu Saigon Logistics Center (Kajima - Japan)



Grain Processing Plant (BUNGE) – 710 MT



Trung Giang Fishery Cold Storage (Panels Inside Columns - GMP License)



Aeon Mall - Tan Phu Geladon, Binh Duong Canary, Long Bien, Binh Tan, Hai Dong (Vietnam), Phnom Penh (Cambodia)



Inside Tower of Aeon Mall Binh Duong Canary



Four - Floor Parking of Aeon Mall Phnom Penh, Cambodia



Turbine Component Plant (GE - USA) - 2,300 MT



Cansport Cambodia Car Parking Butterfly with Single Column



Petro Vietnam's Dung Quat Bio Ethanol Plant - 1,100 MT



Stunning Curved Roof Sport Stadium



Curved Roof Agfish Seafood Factory - 8,000 m<sup>2</sup>



SunSCO Steel Factory (United Steel - Taiwan) - 2,000 MT

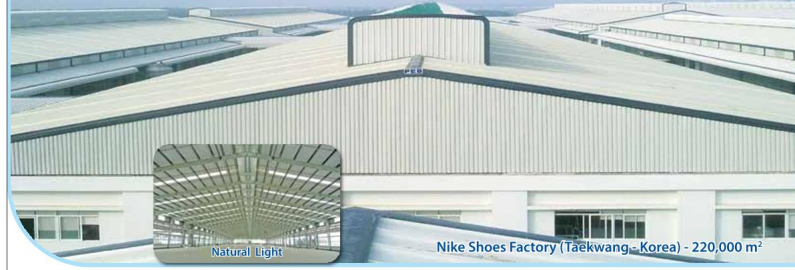


Schenker Logistic Center (Germany) - 15,000 m<sup>2</sup>



TH True Milk (Vietnam) - 218,000 m<sup>2</sup>

The 1<sup>st</sup> industrial project in Vietnam to meet LEED™ requirements.



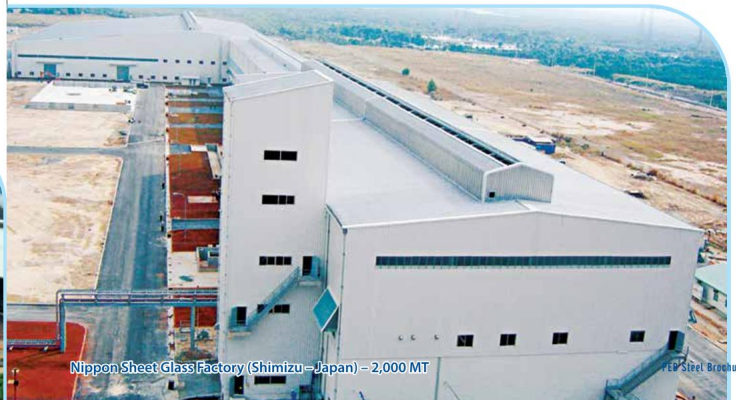
Nike Shoes Factory (Taekwang - Korea) - 220,000 m<sup>2</sup>



GMP Accredited Binh An Seafood Processing Factory - 11,000 m<sup>2</sup>



Sapporo Brewery Factory (Vinata - Japan)



Nippon Sheet Glass Factory (Shimizu - Japan) - 2,000 MT

# PROJECTS REFERENCE



Scoter North Home Care Liquid (Unilever - Netherlands)  
200,000 Man Hours Without a Lost Time Incident



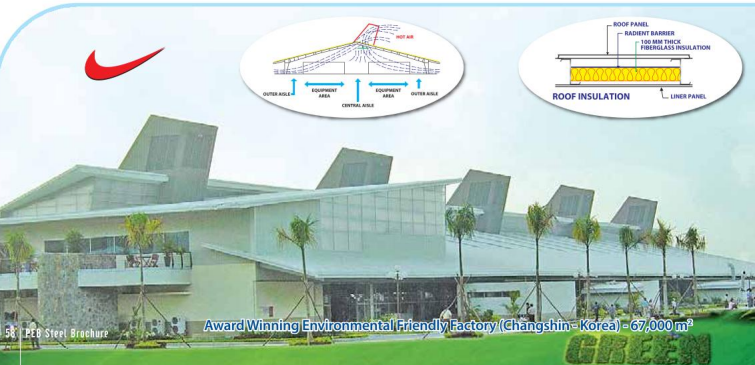
Vietnam Brewery Limited Factory - 1,000 MT



Korea - Vietnam Fertilizer Plant (Vietnam)



Chanh Duong Paper Mill, Huge R.V System



Award Winning Environmental Friendly Factory (Changshin - Korea) - 67,000 m<sup>2</sup>



Solid Waste Treatment (USA) - 63,200 m<sup>2</sup>



VinFast Automobile Manufacturing Complex (Haiphong - Vietnam) - 14,000 MT



Beesco Vina Binh Phuoc - Water Distribution Tray



Thaco Trung Hai - Thua Thien Hue showroom



Srithai Ha Noi Plastic Factory



Stroman Plastic Pipe Factory (Tan A Dai Thanh)



TH School (TH True Milk Vietnam)



United Nations International School of Hanoi



Ojtex Paper Factory

42.5M High, Instant Coffee Factory (Ngon Coffee - India) - 2,700 MT



# CERTIFICATION & TESTIMONIALS

**UNION GALVASTEEL**  
PRIMA Quality

**CERTIFICATION**

This is to certify that PEB STEEL LTD. has been certified and successfully completed the Design, Manufacture and Supply of our products.

Product	Quantity	Value	Value
Galvanized Steel Sheet	1000000	1000000	1000000
Galvanized Steel Coil	1000000	1000000	1000000
Galvanized Steel Pipe	1000000	1000000	1000000
Galvanized Steel Rod	1000000	1000000	1000000
Galvanized Steel Wire	1000000	1000000	1000000
Galvanized Steel Mesh	1000000	1000000	1000000
Galvanized Steel Plate	1000000	1000000	1000000
Galvanized Steel Bar	1000000	1000000	1000000
Galvanized Steel Bolt	1000000	1000000	1000000
Galvanized Steel Nut	1000000	1000000	1000000
Galvanized Steel Washer	1000000	1000000	1000000
Galvanized Steel Rivet	1000000	1000000	1000000
Galvanized Steel Stud	1000000	1000000	1000000
Galvanized Steel Anchor	1000000	1000000	1000000
Galvanized Steel Bracket	1000000	1000000	1000000
Galvanized Steel Flange	1000000	1000000	1000000
Galvanized Steel Gasket	1000000	1000000	1000000
Galvanized Steel Seal	1000000	1000000	1000000
Galvanized Steel Pad	1000000	1000000	1000000
Galvanized Steel Shim	1000000	1000000	1000000
Galvanized Steel Spacer	1000000	1000000	1000000
Galvanized Steel Plug	1000000	1000000	1000000
Galvanized Steel Pin	1000000	1000000	1000000
Galvanized Steel Key	1000000	1000000	1000000
Galvanized Steel Cotter	1000000	1000000	1000000
Galvanized Steel Lock	1000000	1000000	1000000
Galvanized Steel Keyhole	1000000	1000000	1000000
Galvanized Steel Pinion	1000000	1000000	1000000
Galvanized Steel Gear	1000000	1000000	1000000
Galvanized Steel Shaft	1000000	1000000	1000000
Galvanized Steel Coupling	1000000	1000000	1000000
Galvanized Steel Pulley	1000000	1000000	1000000
Galvanized Steel V-belt	1000000	1000000	1000000
Galvanized Steel Chain	1000000	1000000	1000000
Galvanized Steel Sprocket	1000000	1000000	1000000
Galvanized Steel Worm	1000000	1000000	1000000
Galvanized Steel Gearbox	1000000	1000000	1000000
Galvanized Steel Motor	1000000	1000000	1000000
Galvanized Steel Drive	1000000	1000000	1000000
Galvanized Steel Shaft	1000000	1000000	1000000
Galvanized Steel Coupling	1000000	1000000	1000000
Galvanized Steel Pulley	1000000	1000000	1000000
Galvanized Steel V-belt	1000000	1000000	1000000
Galvanized Steel Chain	1000000	1000000	1000000
Galvanized Steel Sprocket	1000000	1000000	1000000
Galvanized Steel Worm	1000000	1000000	1000000
Galvanized Steel Gearbox	1000000	1000000	1000000
Galvanized Steel Motor	1000000	1000000	1000000
Galvanized Steel Drive	1000000	1000000	1000000

We are glad to see that PEB STEEL LTD. has performed a very valuable job in terms of product services, maintaining their effort of giving complete customer service to the satisfaction of our clients.

We are very happy with the services rendered by PEB STEEL LTD. during the entire length of work and hope that we can get continued cooperation and support in future.

We wish them success in the future.

Yours faithfully,  
  
 Director

**SAMSUNG**

SAMSUNG ENGINEERING CO., LTD.  
 (Since October, 2017)

**TO WHOM IT MAY CONCERN**

This is to certify that PEB STEEL BUILDINGS CO., LTD. has been certified and successfully completed the Design, Manufacture and Supply of our products.

The total amount of our PEB Steel orders. This is a long and successful working relationship and we are very satisfied with the quality and service of our products.

We are glad to see that PEB STEEL LTD. has performed a very valuable job in terms of product services, maintaining their effort of giving complete customer service to the satisfaction of our clients.

We are very happy with the services rendered by PEB STEEL LTD. during the entire length of work and hope that we can get continued cooperation and support in future.

We wish them success in the future.

Yours faithfully,  
  
 Director

**aboitiz**  
Construction

**CERTIFICATION**

This is to certify that our company has contracted with PEB STEEL for the Design and Fabrication of Pre-Engineered Buildings for the following Projects:

Name of Project	Project Location	Total Area
Acacia Project (Building)	Cebu, Philippines	31,504 sq. m.
Line Project (Building)	Surabaya, Philippines	30,000 sq. m.
IGPIT Building	Surabaya, Philippines	10,000 sq. m.
Palmerston Hotel	Palmerston	1,000 sq. m.
Acacia Project (Site 02)	Cebu, Philippines	1,000 sq. m.

PEB Steel successfully met our needs in terms of design and technical requirement. PEB Steel through their team effort facilitated the successful completion of our project. We are very satisfied with the high quality and performance service from the Pre-Engineered Building Industry. PEB STEEL is our company's contractor.

We wish them success in the future.

Sincerely,  
  
 Aboitiz Construction, Inc.

**UNION GALVASTEEL**

**TO WHOM IT MAY CONCERN**

This is to certify that PEB STEEL LTD. has been certified and successfully completed the Design, Manufacture and Supply of our products.

The total amount of our PEB Steel orders. This is a long and successful working relationship and we are very satisfied with the quality and service of our products.

We are glad to see that PEB STEEL LTD. has performed a very valuable job in terms of product services, maintaining their effort of giving complete customer service to the satisfaction of our clients.

We are very happy with the services rendered by PEB STEEL LTD. during the entire length of work and hope that we can get continued cooperation and support in future.

We wish them success in the future.

Yours faithfully,  
  
 Director

**SAMSUNG ENGINEERING CO., LTD.**

SAMSUNG ENGINEERING CO., LTD.  
 (Since October, 2017)

**TO WHOM IT MAY CONCERN**

This is to certify that PEB STEEL BUILDINGS CO., LTD. has been certified and successfully completed the Design, Manufacture and Supply of our products.

The total amount of our PEB Steel orders. This is a long and successful working relationship and we are very satisfied with the quality and service of our products.

We are glad to see that PEB STEEL LTD. has performed a very valuable job in terms of product services, maintaining their effort of giving complete customer service to the satisfaction of our clients.

We are very happy with the services rendered by PEB STEEL LTD. during the entire length of work and hope that we can get continued cooperation and support in future.

We wish them success in the future.

Yours faithfully,  
  
 Director

**aboitiz**  
Construction

**CERTIFICATION**

This is to certify that our company has contracted with PEB STEEL for the Design and Fabrication of Pre-Engineered Buildings for the following Projects:

Name of Project	Project Location	Total Area
Acacia Project (Building)	Cebu, Philippines	31,504 sq. m.
Line Project (Building)	Surabaya, Philippines	30,000 sq. m.
IGPIT Building	Surabaya, Philippines	10,000 sq. m.
Palmerston Hotel	Palmerston	1,000 sq. m.
Acacia Project (Site 02)	Cebu, Philippines	1,000 sq. m.

PEB Steel successfully met our needs in terms of design and technical requirement. PEB Steel through their team effort facilitated the successful completion of our project. We are very satisfied with the high quality and performance service from the Pre-Engineered Building Industry. PEB STEEL is our company's contractor.

We wish them success in the future.

Sincerely,  
  
 Aboitiz Construction, Inc.

# BANK REFERENCE

**ANZ**

Date: 7 August 2006

**TO WHOM IT MAY CONCERN**

This is to certify that PEB STEEL BUILDINGS CO., LTD. has been certified and successfully completed the Design, Manufacture and Supply of our products.

The total amount of our PEB Steel orders. This is a long and successful working relationship and we are very satisfied with the quality and service of our products.

We are glad to see that PEB STEEL LTD. has performed a very valuable job in terms of product services, maintaining their effort of giving complete customer service to the satisfaction of our clients.

We are very happy with the services rendered by PEB STEEL LTD. during the entire length of work and hope that we can get continued cooperation and support in future.

We wish them success in the future.

Yours faithfully,  
  
 Director

**BIDV**

VIETNAM INVESTMENT AND DEVELOPMENT BANK

VIỆT NAM THƯƠNG MẠI, CỔ PHẦN, 2017

**TO WHOM IT MAY CONCERN**

This is to certify that PEB STEEL BUILDINGS CO., LTD. has been certified and successfully completed the Design, Manufacture and Supply of our products.

The total amount of our PEB Steel orders. This is a long and successful working relationship and we are very satisfied with the quality and service of our products.

We are glad to see that PEB STEEL LTD. has performed a very valuable job in terms of product services, maintaining their effort of giving complete customer service to the satisfaction of our clients.

We are very happy with the services rendered by PEB STEEL LTD. during the entire length of work and hope that we can get continued cooperation and support in future.

We wish them success in the future.

Yours faithfully,  
  
 Director

**VIETNAM MUGDA JOINT STOCK COMPANY**

VIỆT MUGDA JOINT STOCK COMPANY  
 (Since October, 2017)

**TO WHOM IT MAY CONCERN**

This is to certify that PEB STEEL BUILDINGS CO., LTD. has been certified and successfully completed the Design, Manufacture and Supply of our products.

The total amount of our PEB Steel orders. This is a long and successful working relationship and we are very satisfied with the quality and service of our products.

We are glad to see that PEB STEEL LTD. has performed a very valuable job in terms of product services, maintaining their effort of giving complete customer service to the satisfaction of our clients.

We are very happy with the services rendered by PEB STEEL LTD. during the entire length of work and hope that we can get continued cooperation and support in future.

We wish them success in the future.

Yours faithfully,  
  
 Director

**ANZ**

Date: 7 August 2006

**TO WHOM IT MAY CONCERN**

This is to certify that PEB STEEL BUILDINGS CO., LTD. has been certified and successfully completed the Design, Manufacture and Supply of our products.

The total amount of our PEB Steel orders. This is a long and successful working relationship and we are very satisfied with the quality and service of our products.

We are glad to see that PEB STEEL LTD. has performed a very valuable job in terms of product services, maintaining their effort of giving complete customer service to the satisfaction of our clients.

We are very happy with the services rendered by PEB STEEL LTD. during the entire length of work and hope that we can get continued cooperation and support in future.

We wish them success in the future.

Yours faithfully,  
  
 Director

**BIDV**

VIETNAM INVESTMENT AND DEVELOPMENT BANK

VIỆT NAM THƯƠNG MẠI, CỔ PHẦN, 2017

**TO WHOM IT MAY CONCERN**

This is to certify that PEB STEEL BUILDINGS CO., LTD. has been certified and successfully completed the Design, Manufacture and Supply of our products.

The total amount of our PEB Steel orders. This is a long and successful working relationship and we are very satisfied with the quality and service of our products.

We are glad to see that PEB STEEL LTD. has performed a very valuable job in terms of product services, maintaining their effort of giving complete customer service to the satisfaction of our clients.

We are very happy with the services rendered by PEB STEEL LTD. during the entire length of work and hope that we can get continued cooperation and support in future.

We wish them success in the future.

Yours faithfully,  
  
 Director

**VIETNAM MUGDA JOINT STOCK COMPANY**

VIỆT MUGDA JOINT STOCK COMPANY  
 (Since October, 2017)

**TO WHOM IT MAY CONCERN**

This is to certify that PEB STEEL BUILDINGS CO., LTD. has been certified and successfully completed the Design, Manufacture and Supply of our products.

The total amount of our PEB Steel orders. This is a long and successful working relationship and we are very satisfied with the quality and service of our products.

We are glad to see that PEB STEEL LTD. has performed a very valuable job in terms of product services, maintaining their effort of giving complete customer service to the satisfaction of our clients.

We are very happy with the services rendered by PEB STEEL LTD. during the entire length of work and hope that we can get continued cooperation and support in future.

We wish them success in the future.

Yours faithfully,  
  
 Director

www.PEBsteel.com

PEB STEEL Network



**HCMC (HEAD OFFICE)**

Unit T01, 7th Floor, C.T Plaza,  
 60A Tuong Son St., Ward 2,  
 Tan Binh Dist., Ho Chi Minh City,  
 Vietnam.  
 Tel: (84) (28) 3 8475 475  
 Fax: (84) (28) 3 8476 476  
 Email: marketing@pebsteel.com.vn

**REPRESENTATIVE OFFICES**

OFFICE	CODE	PHONE	FAX
HCM Office	(84) (28)	6299 0069	6299 0067
HA NOI	(84) (24)	3 9 747 747	3 9 746 746
DA NANG	(84) (236)	3 92 82 82	6 25 27 27
BANGKOK	(66 0)	2 258 4639 - 41	2 258 4643
JAKARTA	(62) (21)	520 3025 / 520 3001	
KUALA LUMPUR	(603)	7832 3000	2181 2030
MANILA	(63) (2)	813 7684 / 813 7680	813 7684
PHNOM PENH	(855) (23)	678 8679	

**Yung Tau Factories**  
 Dong Xuyen Industrial Park,  
 Ba Ria Vung Tau Province, Vietnam.

**Myanmar Factory**  
 Thilawa Special Economic Zone - TSEZ  
 Yangon, Myanmar.

**India Factory**  
 Pithampur, Madhya Pradesh State, India.

Copyright © 2018 by PEB Steel Buildings Co., Ltd. All rights reserved. No part of this brochure may be reproduced without the prior written consent of PEB Steel Buildings Co., Ltd. PEB reserves the right to make changes as when deemed necessary.